

Water Gator Hard Surface Pumping System

Operator's Manual

Doc # 98-20016

Rev. 04/2011



Distributed By:

JanSan
— Manufacturing Co. —

Po Box 14065
Merrillville, IN 46411
866-350-7160
www.JanSanMFG.com

Delivery & Unpacking

Your machine was protectively packed to prevent damage in shipment. We suggest that upon removing the unit from its carton, carefully inspect it for any possible damage in transit. If damage is discovered, immediately notify the transportation company who delivered your machine. We are unable to act upon any claim for concealed damage; you must originate the claim.

Limited Warranty

1 Year Limited Warranty on Parts

This machine is warranted for one (1) year to be free from manufacturing defects due to imperfections in workmanship and materials. The Manufacturer will exchange parts for your floor machine in the event of a manufacturing defect as follows:

PARTS: New or comparable rebuilt parts, for one year after original purchase and three years on motor and transmission.

Normal wear items have a warranty of 90 days. Normal wear items include: carbon brushes, bearings, hoses, filters, gaskets, quick connects, switches, solenoids, electrical power cords, o-rings, cross fitting rubber gaskets, wheels, casters, or any part deemed as a wear item by the original manufacturer.

Contact an authorized service center for warranty item exchanges/repairs. Customer responsible for all shipping costs.

IMPORTANT WARRANTY CONDITIONS: A purchase receipt or other proof of date of original consumer purchase also will be required before warranty service is rendered.

This warranty covers normal use and does not cover damage which occurs in shipment or failure resulting from alteration, accident, misuse, abuse, neglect, or improper maintenance.

STATEMENT: This warranty is not transferable and extends only to the original purchaser when a new floor machine is purchased from an Authorized Dealer. This warranty gives you specific legal rights, and you may have other rights that vary from state to state.

Safety Instructions

This machine is designed to be safe when used to perform the functions specified in this Operator's Manual. Should damage occur to electrical or mechanical parts, Prior to further use, the machine should be repaired by the manufacturer or competent service center to avoid further damage to the machine or physical injury to user.

This machine should be grounded while in use to protect the operator from electric shock. This machine is equipped with a 3-prong GFCI Plug & Power cord. The machine is intended for use on a nominal 120 volt circuit.

WARNINGS

Read All Instructions Before Using This Appliance

When using an electrical appliance, basic precautions should always be followed.

FREEZE WARNING: Do not allow unit to freeze. Keep out of freezing temperatures.

WARNING - To reduce the risk of fire, electric shock or injury:

- Do not leave appliance when plugged in. Unplug from outlet when not in use and before servicing.
- WARNING: ELECTRIC SHOCK COULD OCCUR IF USED OUTDOORS OR ON WET SURFACES.
- Do not allow to be used as a toy. Close attention is necessary when used by or near children.
- Use only as described in this manual. Use only manufacturer's recommended parts.
- Do not use with damaged cord or plug. If appliance is not working as it should, has been dropped, damaged, left outdoors, or dropped into water, follow warranty instructions and contact an approved service center.
- Do not pull or carry by cord, use cord as a handle, close a door on cord, or pull cord around sharp edges or corners. Do not run appliance over cord. Keep cord away from heated surfaces.
- Do not unplug by pulling on cord. To unplug, grasp the plug, not the cord.
- Do not handle plug or appliance with wet hands.
- Do not put any object into openings.
- Keep hair, loose clothing, fingers and all parts of body away from openings and moving parts.
- Turn off all controls before unplugging.
- Do not use appliance on stairs.
- Always wear safety equipment and appropriate clothing when operating.
- Do not use flammable or combustible liquids such as gasoline or use in areas where they may be present.
- Connect to a properly grounded outlet only.
- Do not attempt to service the unit while appliance is plugged in.

Application

Your Hard Surface Pumping System allows up to 1200psi of working pressure to help turn any extractor into a hard surface cleaning machine. Just use your existing extractor for suction and use this machine for your high pressure spray.

Preparing the Machine for First Use

You must attach the two **Legs** and the **Female Quick Connector w/ Enlarger Fitting** onto the machine before you can use this device. (See "Know Your Machine" section).



Fig A

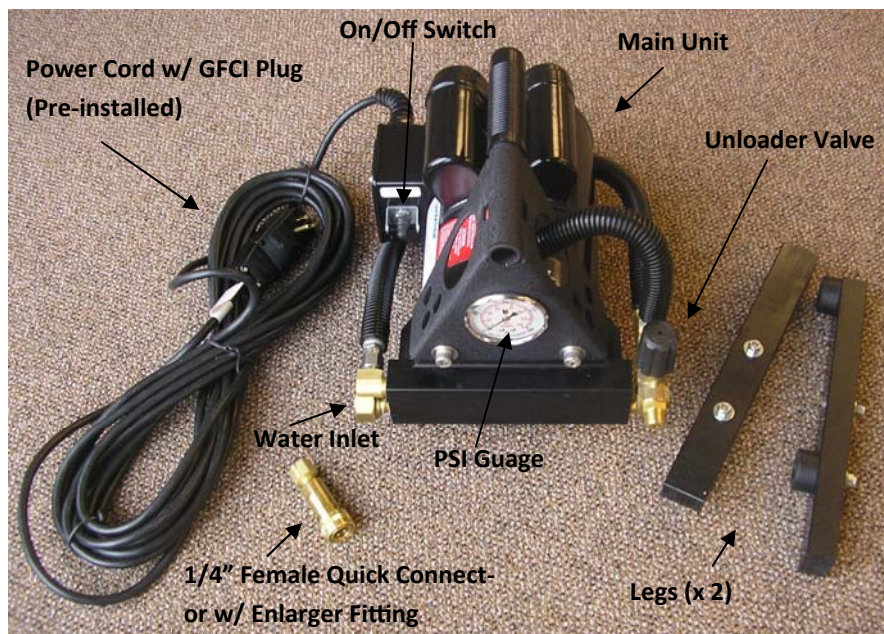
Connect Legs: Connect each leg to the bottom of the unit by removing the lock nuts on each leg and attaching to the bottom plate. (See Fig A).

Connecting the Female Quick Connector w/ Enlarger Fitting: Screw the female thread on the enlarger fitting directly onto the male thread near the Unloader Valve. (Tip: Teflon tape may help prevent leaks). (See Fig B).



Fig B

Know Your Machine



Operating the Machine

- 1) Connect a garden hose (not provided) to the **Water Inlet**. Connect the other end of the garden hose to a sink using an adapter (not provided - readily available at any hardware store).
- 2) Connect your solution hose (not provided) to the **Female Quick Connector**.
- 3) Connect the other end of your solution hose to your hard surface tool (not provided).
- 4) Plug in your machine and make sure the reset button is pushed in.
- 5) Turn the faucet on to start water running to the machine.
- 6) When you are ready to start cleaning, you can turn the unit on using the **ON/OFF Switch**.
- 7) You can adjust the pressure using the **Unloader Valve**.

Maintenance

Chemicals are usually pre-sprayed onto the floor and only clean water is run through this system. However, if you do run chemical through this machine, please run clean water through this machine to flush out before you store unit.

Clean Screen on water inlet before each use.

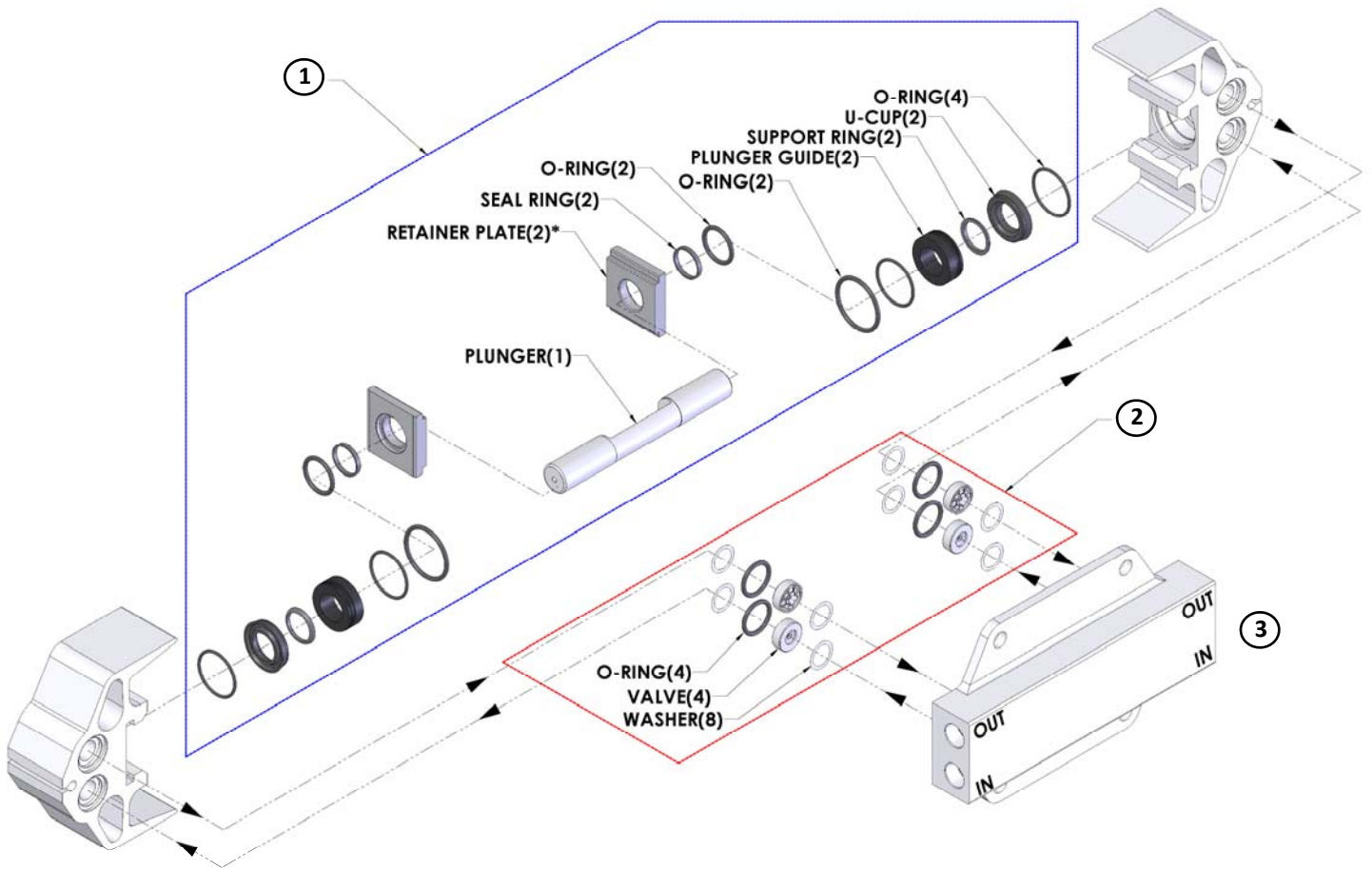
Troubleshooting

Machine Does Not Run: The GFCI plug could have tripped. Reset Plug. OR The circuit breaker has tripped on the back of the motor (Red Button). Allow the circuit breaker 2 minutes to cool before resetting. OR Plug is broken or has loose contact. Replace.

Pump is Leaking: Purchase a Repair Kit to possibly fix (see schematic). OR Replace pump.

Not Getting Proper Pressure: Turn Unloader Valve to adjust pressure. OR Check for clogged jets on your tool (not included). OR Make sure the tool you are using has proper jet sizes (Note: To get 1200psi, you must use # 4 size orifice or smaller—ie. A 4 jet wand needs all 4 jets to have # 1 size tips). OR Make sure screen on Hose Inlet is clean and proper amount of water is getting to machine.

Schematic (Inner parts of pump only)



Ref #	Part #	Part Description
1	50-20047	Plunger & Seal Kit, Buna
2	50-20048	Valve & Seals Kit, Buna
3	50-28005	Pump, Hard Surface Pumping System
4	50-10033	Motor, Hard Surface Pumping System (NOT SHOWN)
5	50-30007	Cam, for Motor/Pump Hard Surface System (NOT SHOWN)
6	50-20049	Unloader Valve, MV520 (NOT SHOWN)
7	50-20050	Water Inlet (NOT SHOWN)
8	50-20051	PSI Guage, 2000psi (NOT SHOWN)