

T1715 & T2015 Floor Machines

Operator's Manual

Doc # 98-20011

Rev. 04/2011



Shown w/ optional Shampoo Tank & Pad Driver

JanSan
— Manufacturing Co. —

Po Box 14065
Merrillville, IN 46411
866-350-7160
www.JanSanMFG.com

Distributed By:

--

Delivery & Unpacking

Your floor machine was protectively packed to prevent damage in shipment. We suggest that upon removing the unit from its carton, carefully inspect it for any possible damage in transit. If damage is discovered, immediately notify the transportation company who delivered your machine. We are unable to act upon any claim for concealed damage; you must originate the claim.

Limited Warranty

1 Year Limited Warranty on Parts, 3 Year Limited Parts Warranty on Motor & Transmission

This floor machine is warranted for one (1) year to be free from manufacturing defects due to imperfections in workmanship and materials. The Manufacturer will exchange parts for your floor machine in the event of a manufacturing defect as follows:

PARTS: New or comparable rebuilt parts, for one year after original purchase and three years on motor and transmission.

Normal wear items have a warranty of 90 days. Normal wear items include: carbon brushes, bearings, hoses, filters, gaskets, quick connects, switches, solenoids, electrical power cords, o-rings, cross fitting rubber gaskets, wheels, casters, or any part deemed as a wear item by the original manufacturer.

Contact an authorized service center for warranty item exchanges/repairs. Customer responsible for all shipping costs.

IMPORTANT WARRANTY CONDITIONS: A purchase receipt or other proof of date of original consumer purchase also will be required before warranty service is rendered.

This warranty covers normal use and does not cover damage which occurs in shipment or failure resulting from alteration, accident, misuse, abuse, neglect, or improper maintenance.

STATEMENT: This warranty is not transferable and extends only to the original purchaser when a new floor machine is purchased from an Authorized Dealer. This warranty gives you specific legal rights, and you may have other rights that vary from state to state.

Safety Instructions

This machine is designed to be safe when used to perform the functions specified in this Operator's Manual. Should damage occur to electrical or mechanical parts, Prior to further use, the machine should be repaired by the manufacturer or competent service center to avoid further damage to the machine or physical injury to user. Your floor machine is equipped with a safety switch lock-out device designed for your safety. Do not attempt to bypass or defeat the safety lockout device. Never use any device to lock the power switch triggers in the ON position.

This floor machine should be grounded while in use to protect the operator from electric shock. This machine is equipped with a 3-conductor cord and a 3-prong grounded type attachment cap plug to fit the proper grounding type receptacle. The green (or green and yellow) conductor in the cord is the grounding wire. Never connect this wire to anything other than the grounding blade. The floor machine is provided with an attachment cap plug and is intended for use on a nominal 120 volt circuit. If a properly grounded receptacle is unavailable a grounding adapter should be installed, if the outlet box that houses the receptacle is grounded. Be sure to fasten the grounding tap to the faceplate screw.

WARNINGS

Read All Instructions Before Using This Appliance

When using an electrical appliance, basic precautions should always be followed.

WARNING - To reduce the risk of fire, electric shock or injury:

- Do not leave appliance when plugged in. Unplug from outlet when not in use and before servicing.
- WARNING: ELECTRIC SHOCK COULD OCCUR IF USED OUTDOORS OR ON WET SURFACES.
- Do not allow to be used as a toy. Close attention is necessary when used by or near children.
- Use only as described in this manual. Use only manufacturer's recommended parts.
- Do not use with damaged cord or plug. If appliance is not working as it should, has been dropped, damaged, left outdoors, or dropped into water, follow warranty instructions and contact an approved service center.
- Do not pull or carry by cord, use cord as a handle, close a door on cord, or pull cord around sharp edges or corners. Do not run appliance over cord. Keep cord away from heated surfaces.
- Do not unplug by pulling on cord. To unplug, grasp the plug, not the cord.
- Do not handle plug or appliance with wet hands.
- Do not put any object into openings. Do not use with any opening blocked; keep free of dust, lint, hair and anything that may reduce air flow.
- Keep hair, loose clothing, fingers and all parts of body away from openings and moving parts.
- Do not pick up anything that is burning or smoking, such as cigarettes, matches or hot ashes.
- Turn off all controls before unplugging.
- Do not use appliance on stairs.
- Always wear safety equipment and appropriate clothing when operating extractor to protect from hot water.
- Do not use to pick up flammable or combustible liquids such as gasoline or use in areas where they may be present.
- Connect to a properly grounded outlet only.
- Do not attempt to service the unit while appliance is plugged in.

Floor Machine Applications

Your 1.5hp machine is extremely versatile. This floor machine can be used to polish, buff, scrub, strip, shampoo, sand, and grind surfaces. Use the proper drivers or brushes for the specific job. Attachments like shampoo tanks, pad drivers, brushes, etc can be found from your local distributor.

Preparing the Machine

To attach the drive block or brush or other attachment, be sure the handle is "locked" in the upright position. Lay the floor machine on its back with the handle lying on the floor, this exposes the driving plate on the underside of the floor machine. Holding the drive block, brush or attachment in both hands and straddling the motor with your back to the handle box, bend over and fit the three slots of the clutch plate (built into the back of the brush) over the three lugs of the driving plate. Turn the drive block, brush or attachment counter-clockwise as far as it will go until it is seated in the ready-to-use position. CAUTION: This is the only proper way to install a drive block, brush or attachment. NEVER put a drive block, brush or attachment on the machine by placing it on the floor and moving the running machine over it, or by placing the machine over the block or attachment and then starting the motor. Return the floor machine to upright position and adjust handle to operating position. Recommended handle position is close to the waist with arms extended down. Lock the cam release lever into position.



Operating the Machine

First install the pad driver and pad, brush or other attachments to be used. Plug the machine in as directed and lower the handle to the desired operating height and lock in place using the cam lever handle. Push the safety switch forward and squeeze the switch triggers beneath the handle grips. This activates the motor and starts the block, brush or attachment in operation. Each time you release the triggers the safety switch will reset. You will need to follow the direction above to restart the machine. **CAUTION:** When leaving the machine unattended, disconnect the wall plug and return the handle to the "locked" upright position to prevent accidental starting.

To Right: raise handle slightly. The higher the handle is lifted, the faster the machine will move to the right. To Left: to change direction, lower the handle until the machine travels to the left. The more the handle is lowered, the faster the movement to the left.

Transporting the Machine

Place the handle in the upright position. Lock the handle cam release lever. Tip the machine back and transport on the wheels.

Maintenance

Once a month remove the motor cover and vacuum out any dust or debris which has accumulated on the motor. Replace the motor cover by setting it over the holes in the housing and replace all of the screws. Check and maintain the tightness of all the fasteners.

WARNING: Do not over-tighten the switch housing screws. Keep the machine clean especially at the handle tube and collar so the handle tube will move freely through the collar. Inspect the cord for cuts, gashes, or loose prongs; replace as needed. Disassembly of this motor voids the warranty. Improper disassembly and assembly of this motor can permanently damage the field or rotor.

Troubleshooting

Machine Does Not Run: The circuit breaker has tripped. Allow the circuit breaker 2 minutes to cool before resetting. Plug is broken or has loose contact. Replace.

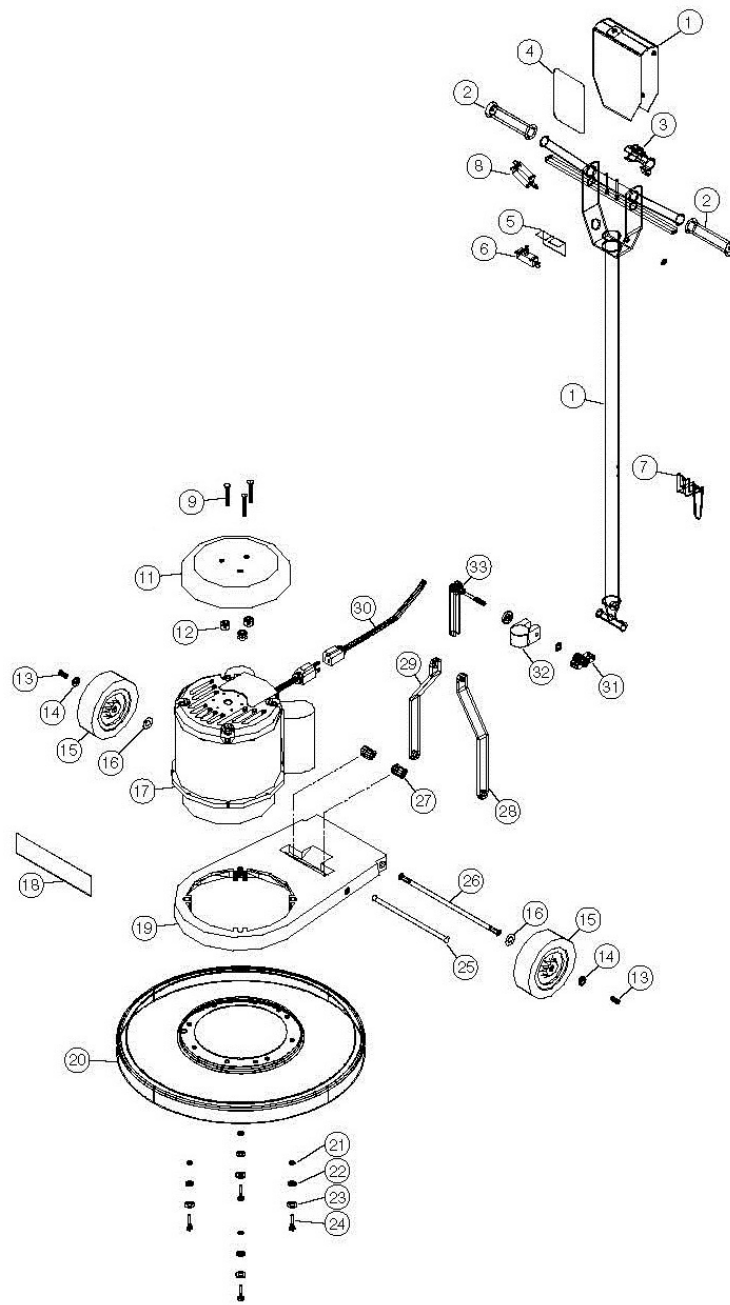
Prevent circuit overload: Check the pad and change it if it is rough or dirty. Spray buffing or spray cleaning is not a substitute for scrubbing or mopping a floor. Prepare the floor surface before spray buffing. Eliminate any extension cord that is smaller than 12/3 wire or greater than 25 feet in length. Unplug anything other than the machine from the circuit or locate another circuit.

Machine will not start: Circuit breaker is not reset. Reset breaker. Plug is broken or has a loose contact. Replace. Circuit breaker is defective or weak. Replace.

Machine will not reach operating speed: Unplug anything else other than the machine from the circuit or locate another circuit.

Motor runs but pad or brush does not turn: Coupling is broken. Replace. Coupling is not covered under warranty. Do not attempt to place a run-

Schematic



Ref #	Part #	Description
1 - a	50-40001	Handle, Floor Machine
1 - b	50-40002	Handle Assembly, Floor Machine
2	50-40003	Handle Grip 1in Dia.
3	50-10002	Thumb switch actuator
4	50-40004	Label Logo (Indicate Model #)
5	50-40005	Insulation sheet 2.5 x 2 x .0.015
6	50-10003	Switch 25 amp sp momentary w/nuts
7	50-40006	Cord hook, plated
8	50-10004	Circuit breaker, 17amp
9	50-50006	10-32 x 3/4 fmhs ss
10		N/A
11	50-40007	Motor Cover
12	50-40008	Spacer for motor cover, metal floor machines
13	50-50007	Screw 1/4-20 x 3/4 flat phillips
14	50-50008	Washer, Countersunk, axle
15	50-40009	Wheel, black 5in x 1-1/4in
16	50-50009	Washer, spring, 1in OD x 1/2in ID
17	50-10001	Motor, 1.5hp 120v 60hz, floor machine

Ref #	Part #	Description
18	50-40010	Label, front floor machine (Indicate Model #)
19	50-40011	Motor base, metal
20 - a	50-40012	Brush cover 17in metal w/ bumper
20 - b	50-40013	Brush cover 20in metal w/ bumper
21	50-50010	Washer 1/4 med split lock zinc
22	50-50011	Washer 5/16 sae flat zinc
23	50-50012	Washer 3/8 sae flat zinc
24	50-50013	Screw 1/4-20 x 1-3/4 hex cap
25	50-50014	Pivot pin metal floor machine
26	50-50015	Axle, wheel
27	50-50016	Spacer, handle, metal floor machine
28	50-40014	Handle brace, left w/ slot
29	50-40015	Handle brace, right w/ hole
30	50-10005	Cord 14/3 SJTW 51.25 black (in handle)
31	50-50017	Knob, plastic, handle clamp
32	50-50018	Clamp, collar, handle
33	50-50019	Cam lever assembly (includes 50-50017 & washers)